

HARMONY

STANDARD FEATURES

Richly Appointed Interiors

- Soaring 9 ft. tall flat ceiling throughout home
- 80' tall windows per floorplan
- Tape & texture walls throughout with modern square corners
- 2" pre-installed window blinds throughout
- Ceiling fan prep in living areas & primary bedroom
- Kwikset® door hardware throughout including a thumb-latch front door set - Matte Black
- Shaw® carpets with Rx2 stain technology
- Congoleum® "Lux" linoleum per print

Gourmet Kitchen

- Large eat-in islands with quartz top Spacious
- walk-in pantries per plan 42" tall hardwood
- cabinets featuring® adjustable upper shelves & hidden hinges (3 color options)
- Frigidaire stainless steel appliances (22' Refer)
- Pfister spring load black matte culinary faucet

®

Primary Suite

- Extra large bedrooms including spacious walk-in closets per plan
- Large solid surface walk-in shower & glass barn door
- Impressive vanity with double sinks
- Pfister® black matte designer faucets

Energy Efficient Building

- eBuilt - Zero Energy Ready Home ®
- Climate zone 3 insulation package
 - R-33 Floors , R-21 Walls, R-50 Roof
- 2x6" Exterior walls
- Argon gas low-E windows
- Architectural shingles with 30 year warranty
- Exterior with 2 dormers (if applicable)
- Craftsman style front door
- 9 lite or sliding glass rear door (per plan)
- Ecobee® Smart Thermostat
- LED Can lighting throughout home (per print)
- Rheem® hybrid water heater
- Carrier® Smart Comfort furnace
- 2 raised hose bibs & 2 exterior GFIs (if applicable)

Custom Options

- Frigidaire® black stainless steel appliances
 - 25 cu ft refrigerator-water & ice door in door
- Solid surface countertops throughout
- Deluxe Primary Glamour Bath
- Solid surface deck tub (if Glam Bath selected)
- WUI fire rated certification
- Whole home gas package
- Upgrade roof loads



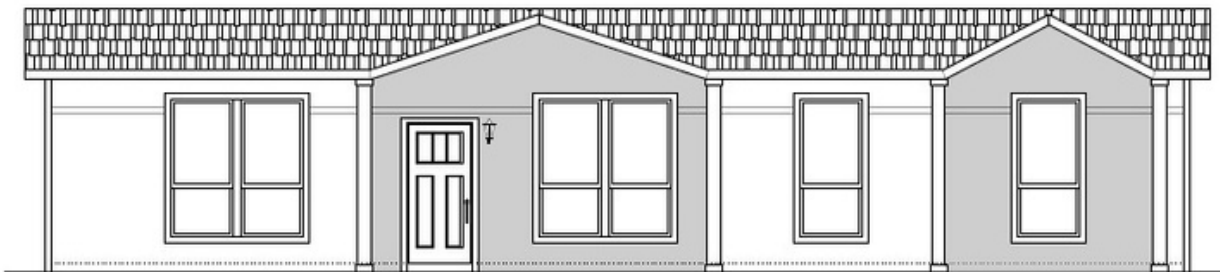
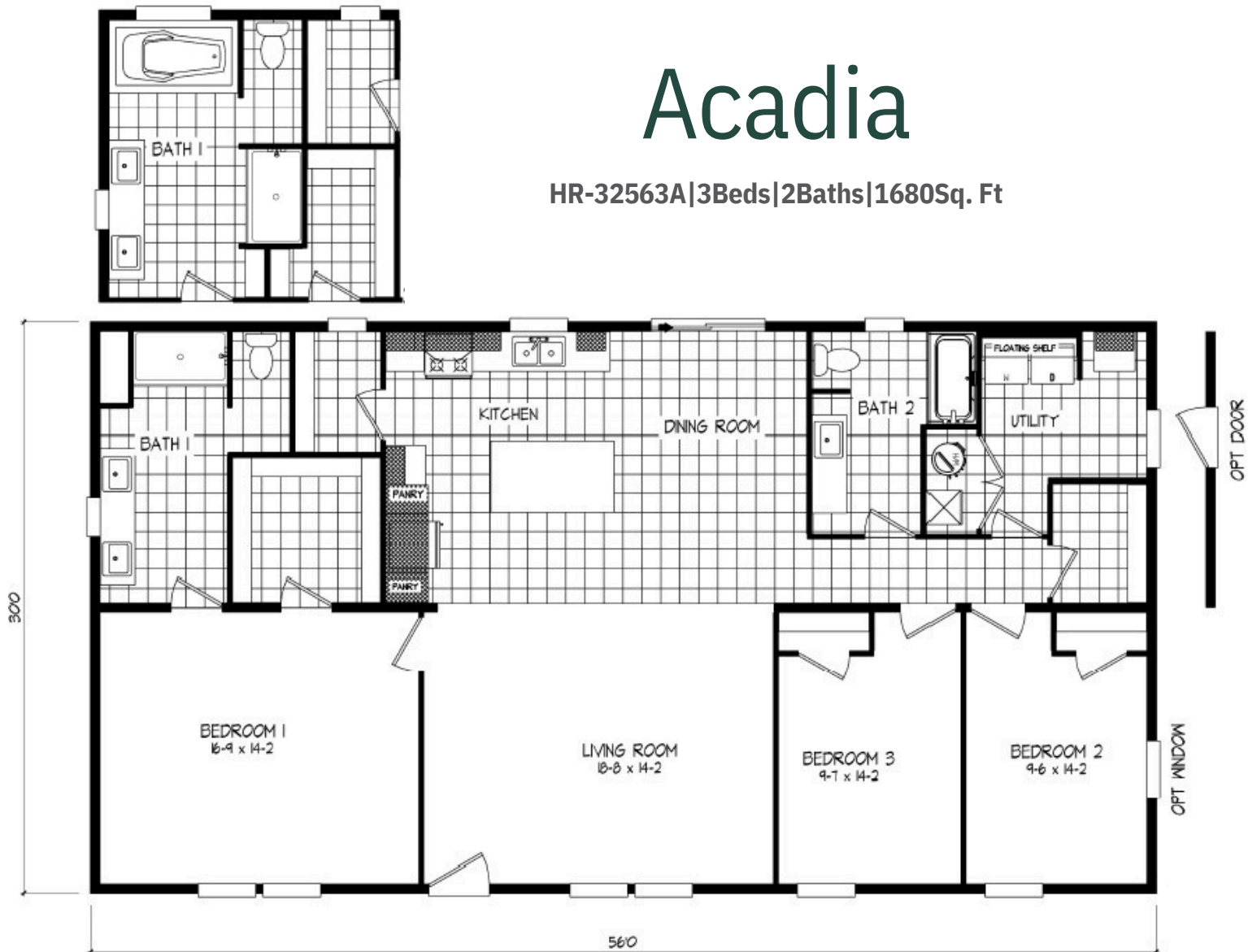
eBuilt Ask me about Zero Energy Ready™ Homes

Scan to learn more about eBuilt™

HARMONY

Acadia

HR-32563A|3Beds|2Baths|1680Sq. Ft



eBuilt Ask me about Zero Energy Ready™ Homes

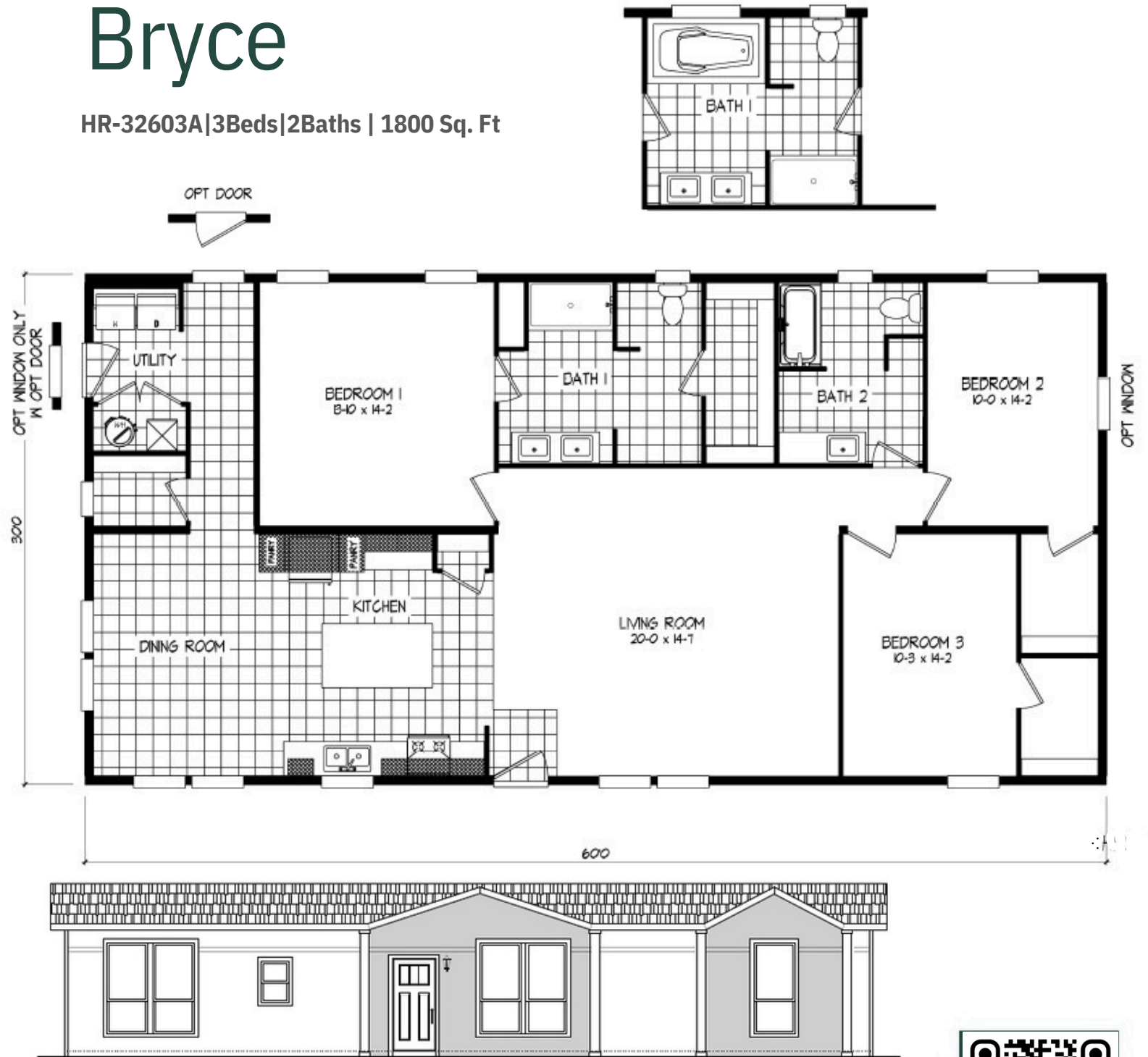


Scan to learn more about eBuilt™

HARMONY

Bryce

HR-32603A|3Beds|2Baths | 1800 Sq. Ft



eBuilt. Ask me about Zero Energy Ready™ Homes

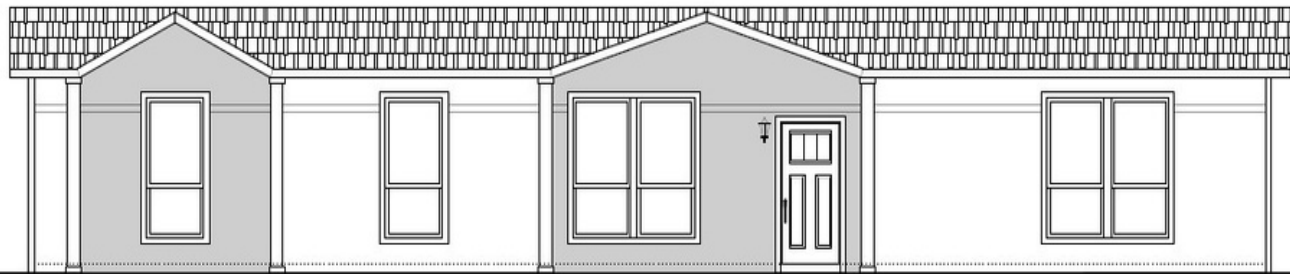
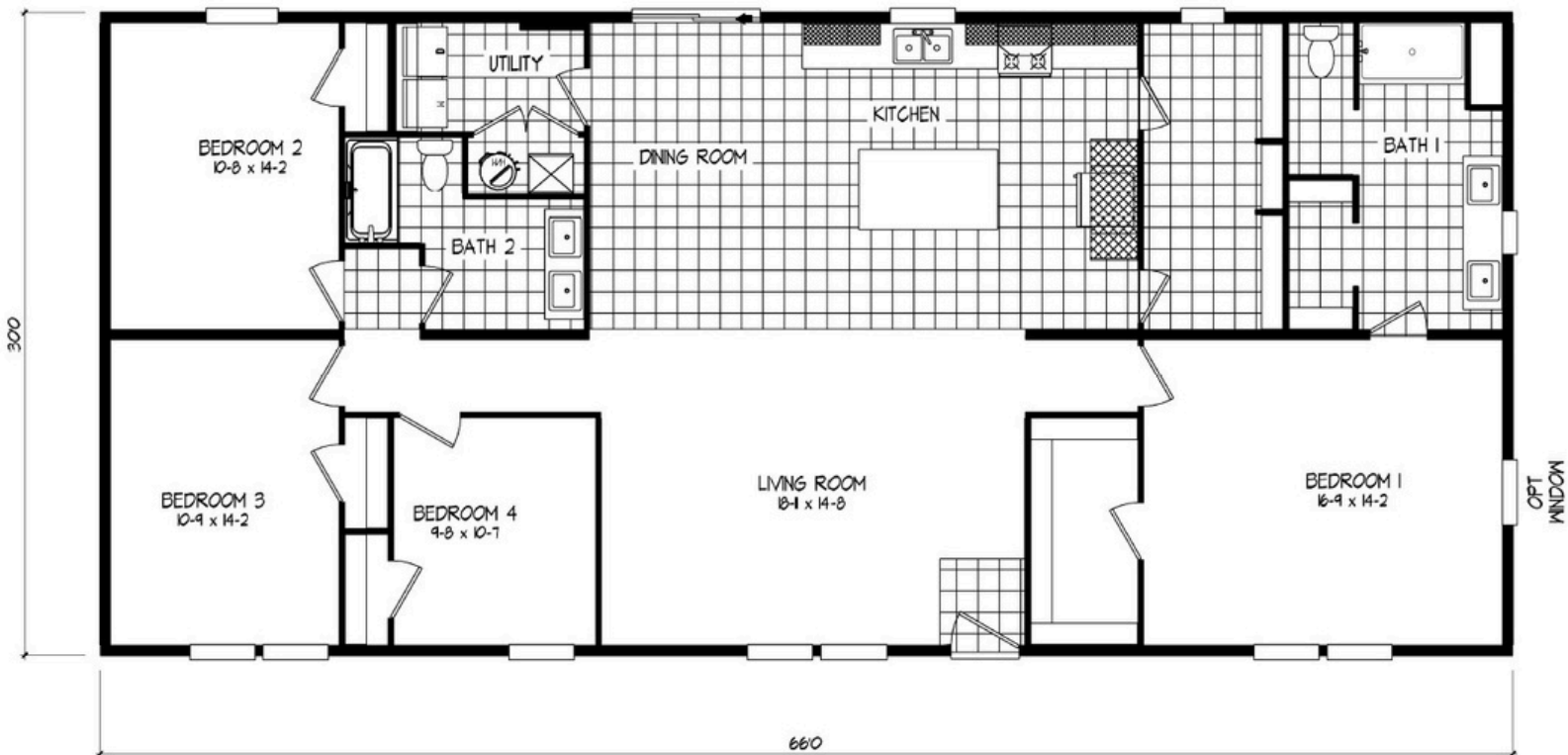
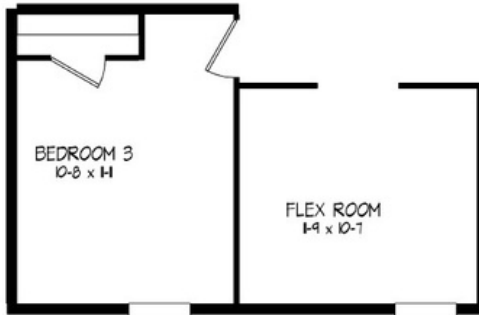


Scan to learn more about eBuilt™

HARMONY

Joshua

HR-32664A|4Beds|2Baths|1980Sq. Ft



eBuilt Ask me about Zero Energy Ready™ Homes

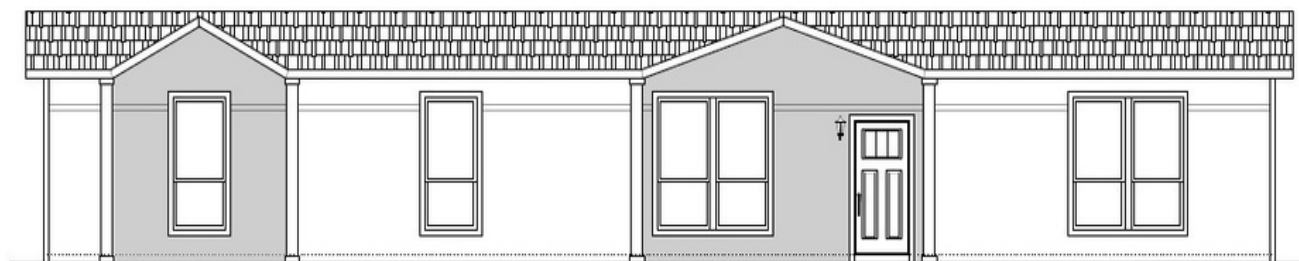
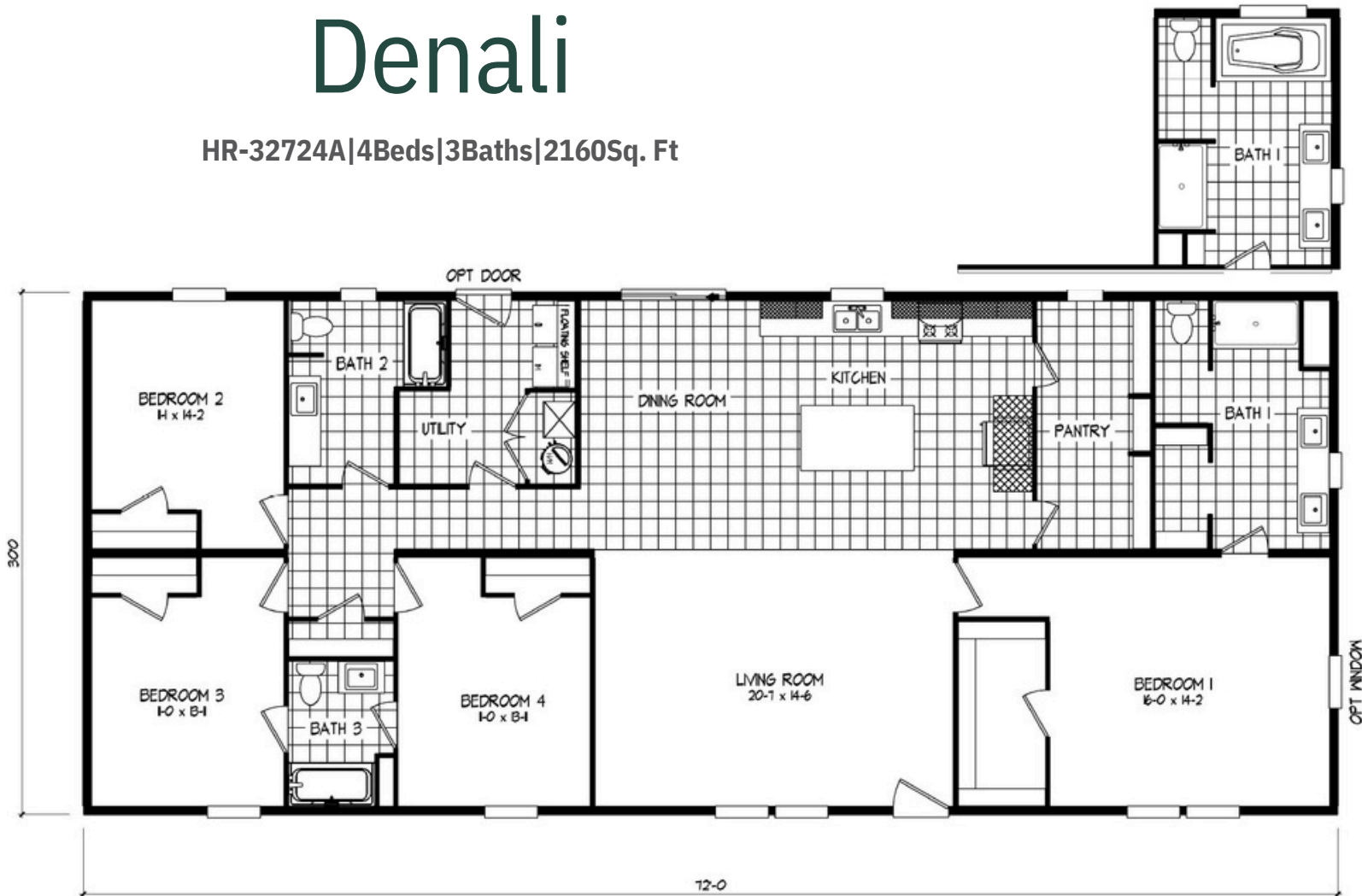


Scan to learn more about eBuilt™

HARMONY

Denali

HR-32724A|4Beds|3Baths|2160Sq. Ft

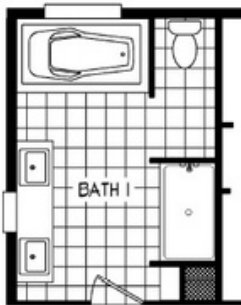


eBuilt Ask me about Zero Energy Ready™ Homes



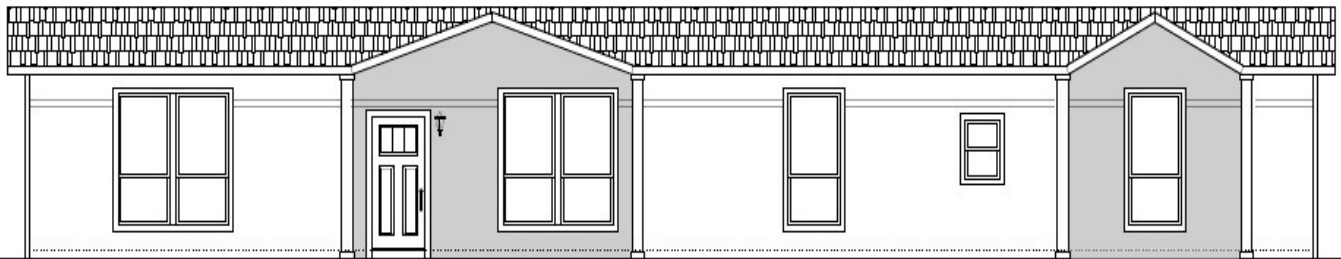
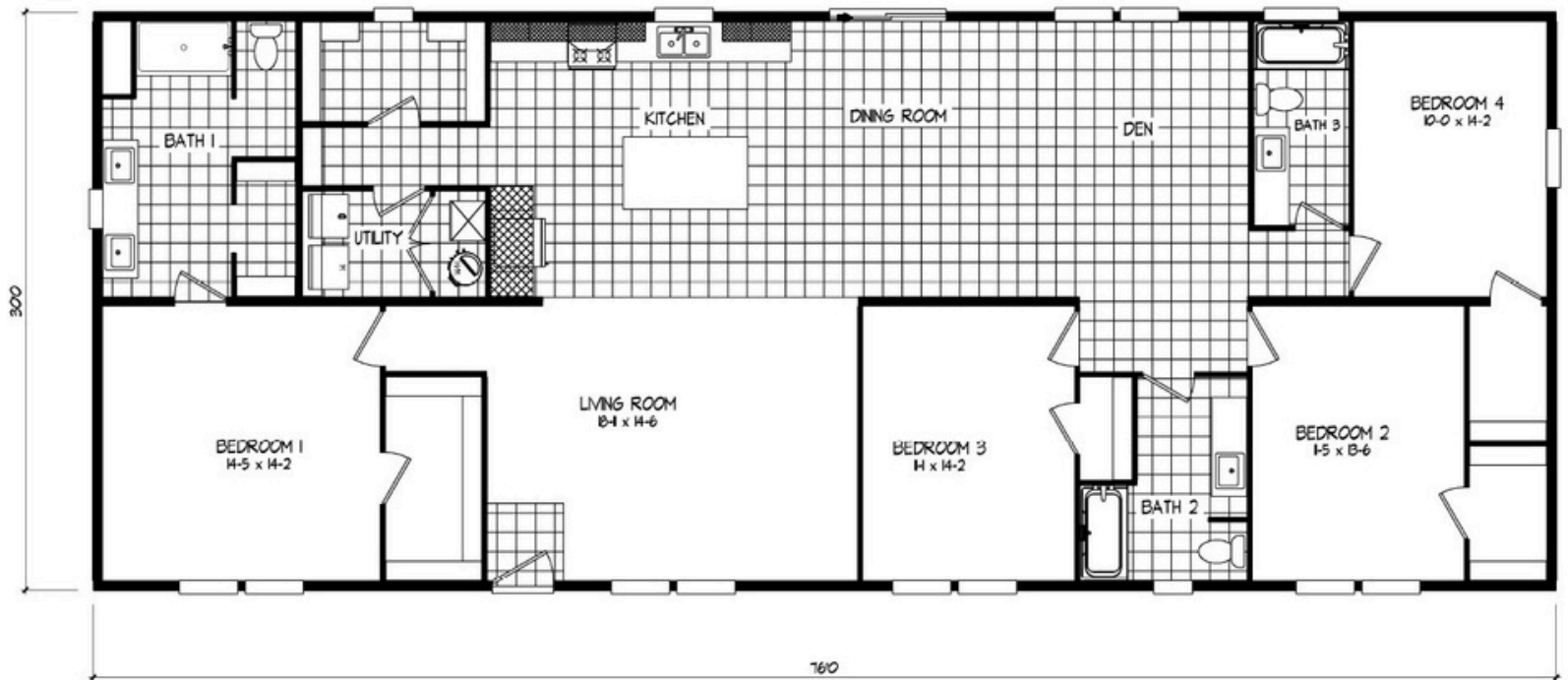
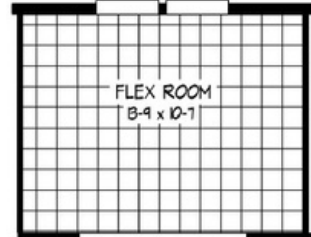
Scan to learn more about eBuilt™

HARMONY



Grand

HR-32764A|4or5Beds|3Baths|2280Sq.
Ft



eBuilt Ask me about Zero Energy Ready™ Homes



Scan to learn more about eBuilt™

The Reserve *West*

Decor Selections

HARDWOOD CABINETS

Select One Color Throughout Home



Bishop Oak



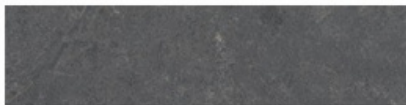
Divine White



Plover

STD COUNTERTOPS

Formica - Throughout Home



Terrena Soapstone



Silver Quartzite

Select One Color Throughout Home

FLOORING

See Floorplan for Type & Location



Linoleum: LUX Natural Oak #311



Carpet: Shaw Weathered New Weave

Multi Section Homes Only

OPT COUNTERTOPS

Solid Surface Throughout Home



Staron - Supreme Cotton White

eBuilt Ask me about Zero Energy Ready™ Homes



Scan to learn more about eBuilt™

HARMONY

EXTERIOR COLORS

Select A Package Below - Trim&ColumnsAreAlways White



ARCHITECTURAL SHINGLES



Weathered Wood



Old English Pewter

eBuilt Ask me about Zero Energy Ready™ Homes



Scan to learn more about eBuilt™

HARMONY

Ask Me About *e*Built™

The highest-performing,
most energy-efficient home
Clayton has ever built.



Scan to tour an eBuilt™ home

Home Features

Solar - ready

Pfister® bathroom fixtures

ecobee® smart thermostat

Argon gas low-E windows

SmartComfort® by Carrier®
heat pump or gas furnace

LED lighting

ENERGY STAR®
Frigidaire® appliances

Additional home insulation

Rheem® hybrid heat pump
water heater

Insulated doors

Sealed duct system

Whole house
ventilation system